



SILVER SERIES



Designed, manufactured and distributed by

**ALIEN**<sup>®</sup>  
THE EVOLUTION OF HYDROPONICS

SET UP INSTRUCTIONS 

Follow this step by step guide to complete the installation of your system.

## SYSTEM SET-UP

Place your pots in the desired location taking care to place them evenly and on a level surface. There is enough pipe included in the kit for the 15L pots to be 50-60cm plant centres and 30L pots at 60-75cm centres.

### Examples:

15L 16 pot system – 2 x 2m (50cm centres) or max 2.4 x 2.4m (60cm centres).

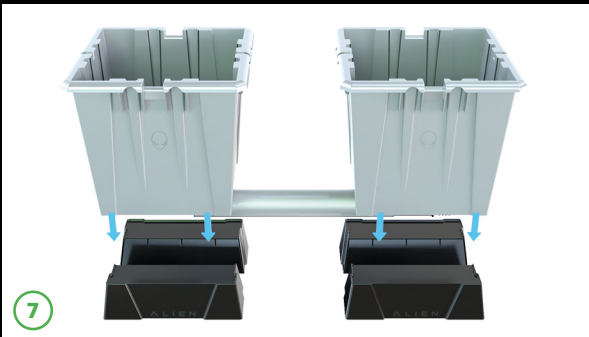
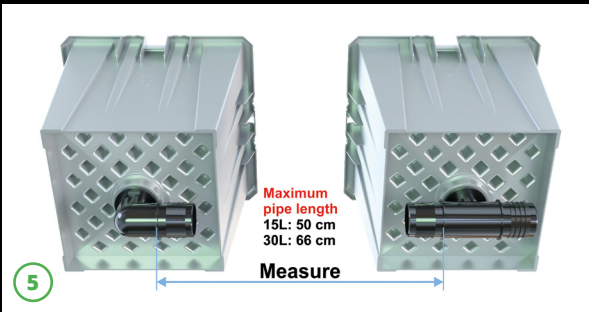
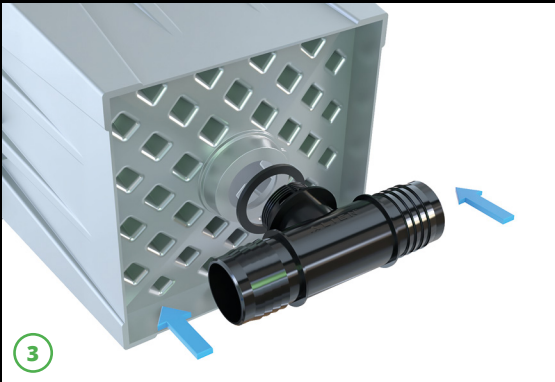
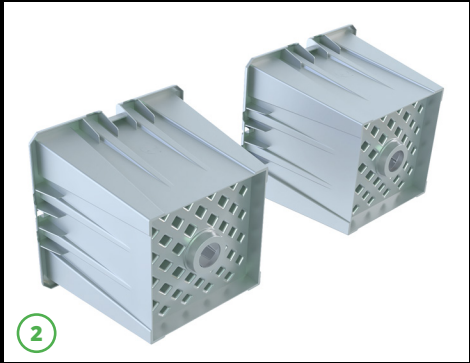
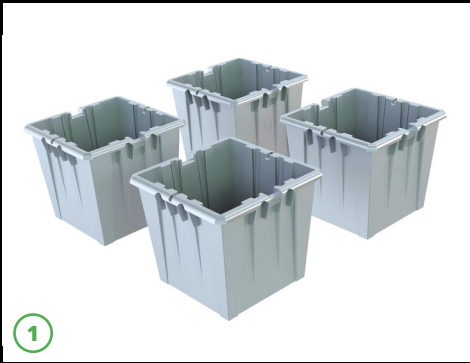
30L 16 pot system – 2.4 x 2.4m (60cm centres) or max 3 x 3m (75cm centres).

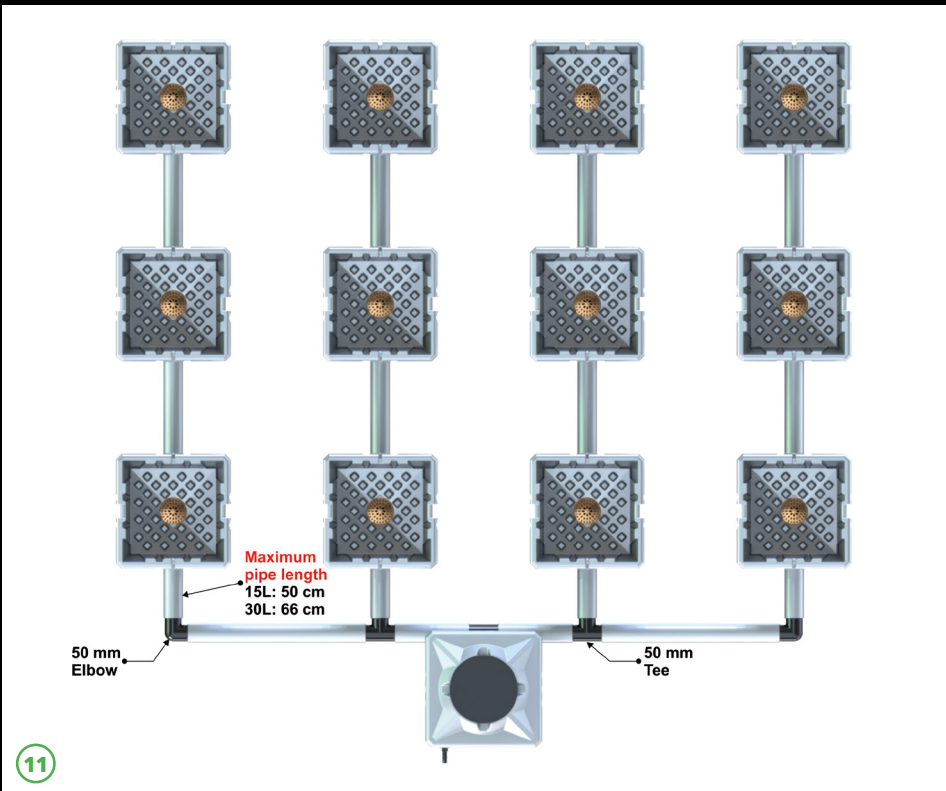
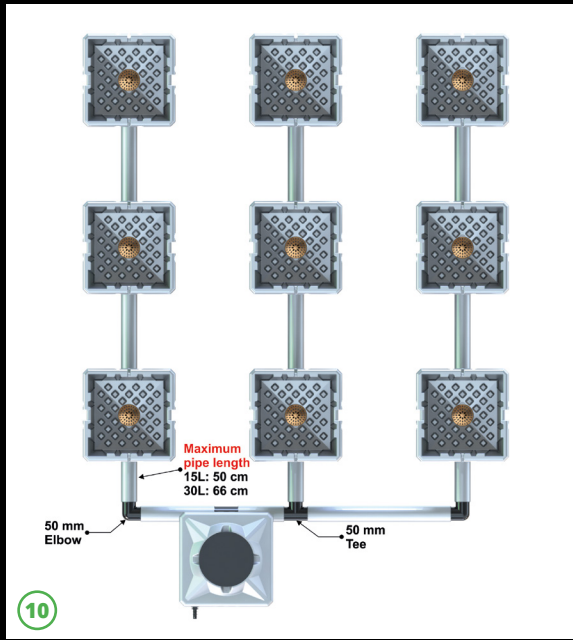
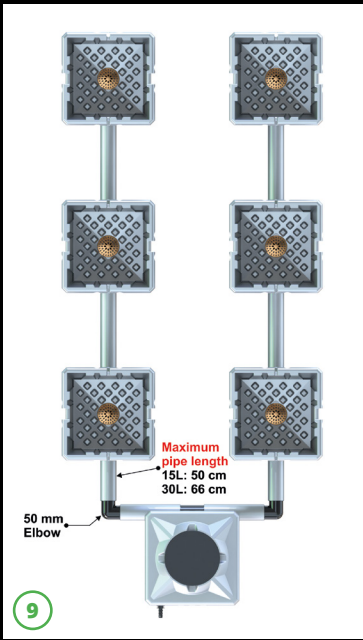
### Pipe lengths between pots:

**15L - 50cm plant centres = 40cm**      **30L - 60cm plant centres = 50cm**

**15L - 60cm plant centres = 50cm**      **30L - 75cm plant centres = 65cm**

- 1 Lay the pots down on their side. Fit the 50mm Dual-Flow™ fittings into the holes at the bottom of the pots. The rubber washer must be on the outside. Using the locating slots, slide the collars over the threads then secure the nut with the spanner provided. Tees are used on all pots except for the end of line where elbows are used.
- 2 to 4
- 5 Measure the distance between the barbed fittings. Taking note of the maximum pipe lengths, cut and fit the 50mm silver pipe. Use warm water or a heat gun to make the pipe more pliable.
- 6
- 7 Place a pair of stands under each pot.
- 8 Fit a tee to the header pot. Refer to the bird's eye images for 2, 3 and 4 row systems. The 48 pot system is a 6 row system. Connect the header to the pots using 32mm tees & elbows. Locating the header further away from the system is possible with extra fittings available on the website. 50mm Dual-Flow straight & 50mm barbed tee.
- 11
- 12 Place a drain cover in the bottom of each pot.  
*The copper drain cover will deter the roots from entering the pipework. The copper will discolour after a period of time, this is a natural occurrence. We recommend replacing them after 6 months of use to maintain the performance.*
- 13 Push-fit the pot clips into the slots on the side of the pots.
- 14 Push-fit the two lid clips into the rectangle holes in the RAIN™ Lids and place one on top of each pot.
- 14a
- 15 If you have a 2 row system (4, 6, 8 or 10 pots), the valves with green taps are screwed directly to the header pot. **Note:** 4 and 6 pot systems may require the valves to be closed slightly to avoid splashing.





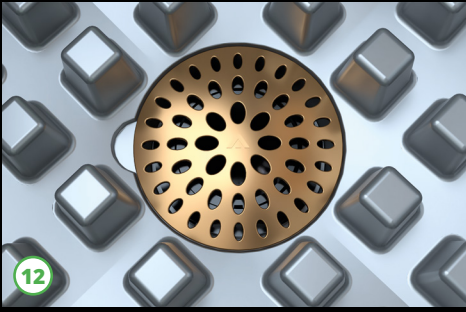
- 16 For 3, 4 and 6 row systems, screw the valves on to the threaded tees and elbows as shown. 9, 12, 15, 16 & 18 pot systems use 19mm threaded tees & elbows, 21 pot systems upwards use 25mm.
- 17 Place the valves as shown and connect them with blue pipe. Use the smaller size of jubilee clips to secure.
- 18
- 19 Use silver 16mm pipe to install the reducing tees in line with the lid clip and attach pieces of 4mm pipe through the slot in the lid clip.
- 20
- 21 The silver 16mm pipe runs the length of the system from the valves to the last pot. Fit 16mm blanks at the end of each line.
- to
- 23

### **CAMO® Tank**

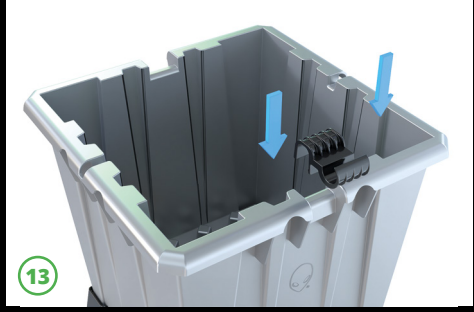
- 24 Assemble the tank using the leaflet provided. The tank can be located inside or outside of the grow room. If located outside, depending on distance, more pipe may be required.

### **RAIN™ Pump**

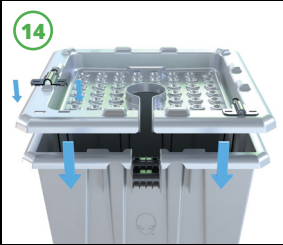
- 25 Fit the blue pipe to the RAIN™ pump and secure with a Jubilee clip.
- 25a 4 - 18 pot systems use 25mm pipe. 21 pot systems upwards use 40mm pipe. The pump sizes are shown here.
- 25b
- 26 Place the RAIN™ pump at the bottom of the tank and fit the 25mm/40mm siphon tee as shown just underneath the lid. Put a piece of pipe through the hole in the tank lid and fit 2 x elbows. Use hose clips to secure all connections on the blue feed line. The drain siphon tee is 19mm and is connected in the same way but without clips. Black 19mm elbows and pipe are used here.
- 26a
- 27 Connect the blue feed line and black drain line to the fittings on the header. Secure feed line with clips.
- 28
- 29 Secure the RAIN™ Brain to a wall, away from possible water contact. Connections to "Power" and "RAIN™ pump" are shown.
- 30 Connect the cable from the red drain pump in the header pot to the ALIEN® adaptor by pushing the connector in and securing the lock nut. You may have a different style of adaptor than the one shown. This should remain powered 24/7. Whenever the pump senses water it will engage and drain the header.



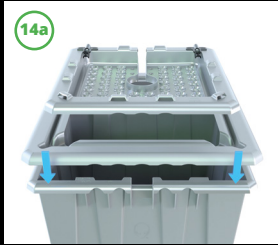
12



13



14



14a

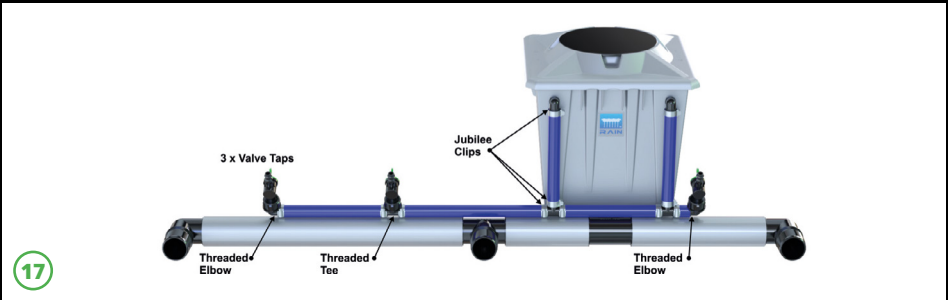


15



16

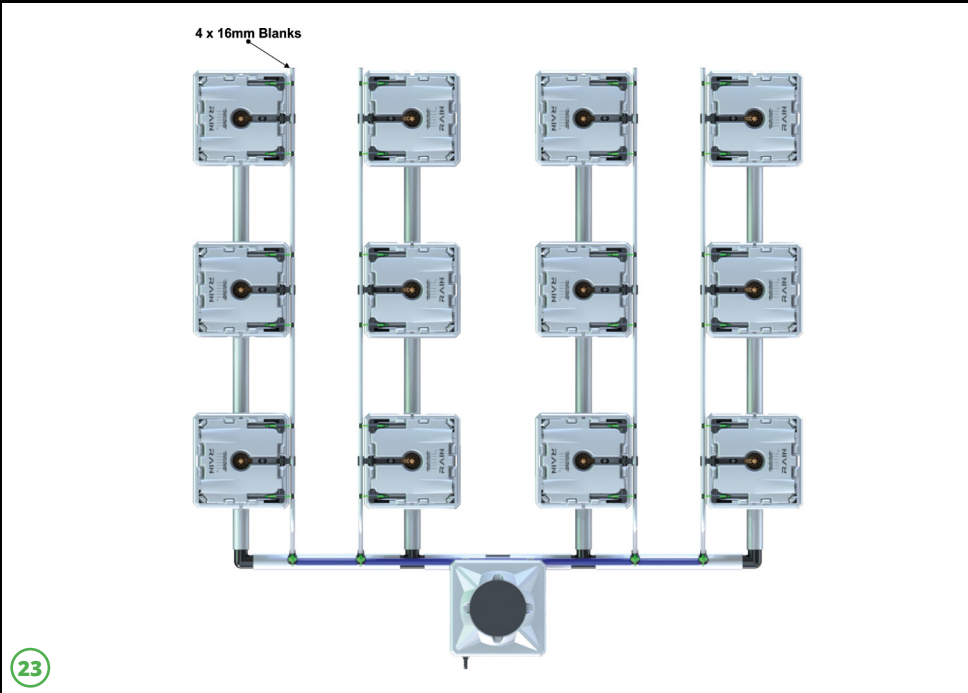
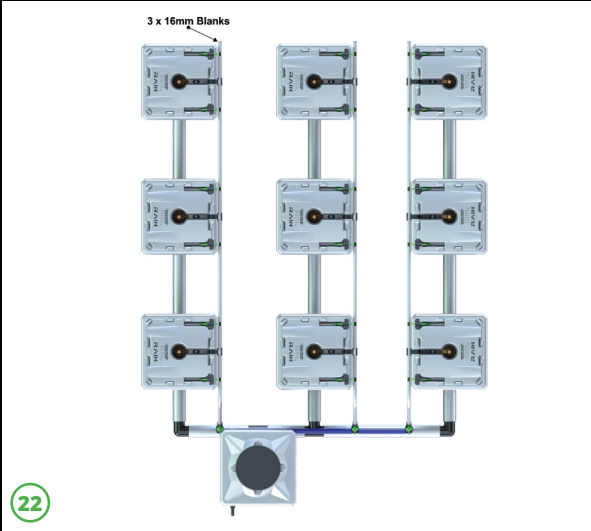
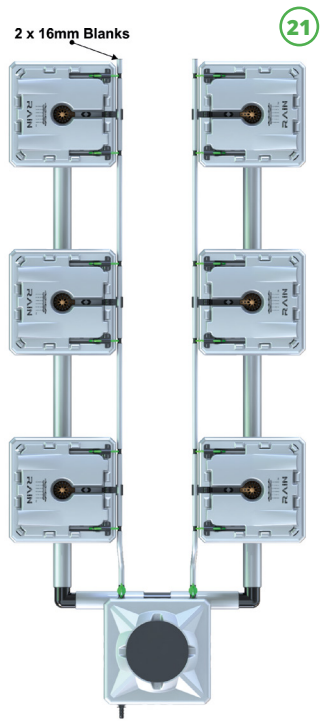
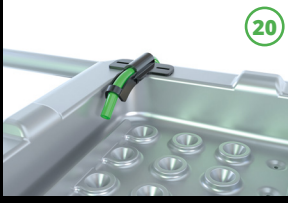
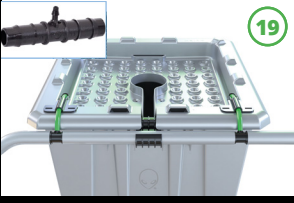
19mm / 25mm threaded tee



17



18





24



25

3500lph



25a

5000lph

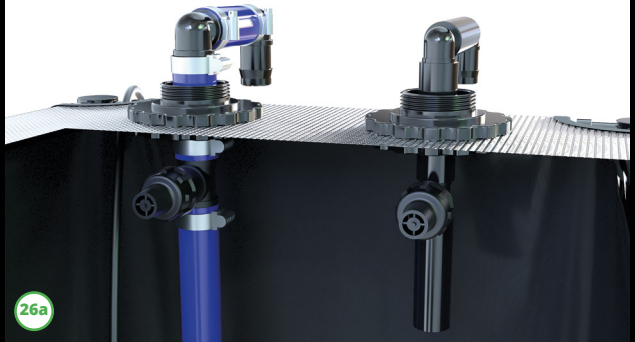


25b

7000lph  
11000lph



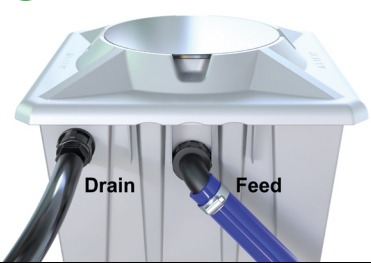
26



26a



27



28

Drain

Feed



29

Rain Pump Plug

Power



30



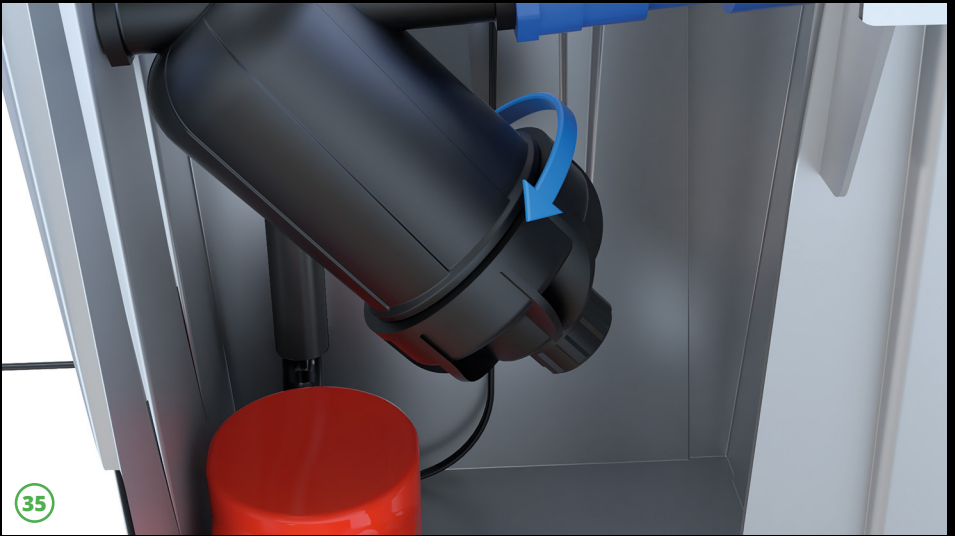


**⌚ RUN TIME**      **🕒 FREQUENCY**

**Minutes**      **Seconds**

**Hours**      **Days**

34



## Planting into the system

- 31 The fabric pot sits inside the plastic pot. It is made of a thick composite material and helps prevent the medium from entering into the system.
- 32 We recommend adding the medium to the pot once placed inside the plastic pot. If filled outside of the pot the weight of the medium can cause the walls of the pot to swell. The medium should be filled to 30mm below the top of the fabric to allow the fitting of the RAIN™ Lid.
- 33 Trim lower branches that are growing under the lid cover. If the plant is not tall enough to protrude the lid cover, run the system without the lid covers until the plants are tall enough.

## SYSTEM OPERATION

### Filling the system

Use a hose pipe to fill the tank. Add the required amount of nutrients. After the first feed, top up the tank as some water will remain in the system.

### RAIN™ Brain

When you select a “Run -Time” position, the RAIN™ pump will engage. When the selected “Run-Time” expires, the system will remain idle until the next feed cycle which is selected by the “Frequency”.

### Frequency Dial

This is how often you require a feed cycle. It depends mostly on the medium being used and the size of the plant. Soil may require watering once every 1-3 days so the “24 - 72hr” setting would be selected. Clay pebbles would be more in the range of once every 2-3 hours. Note, the RAIN™ system will require slightly less watering than hand watering. This is due to the fact that the RAIN™ Lid and cover purposely slow evaporation.

### Run-time Dial

This is the amount of time that the RAIN™ pump will run. These pumps have a high flow rate so the “Run-Time” is normally around “30-60 seconds”. This is a guide as mediums, moisture content and desired run off times could require a slightly different setting.

- 34 For example, if you want to water the plants at 4pm every day for 60 seconds. At 4pm today, select “Frequency” 24hrs and then “Run-Time” 60 seconds. The plants will be watered now and then again tomorrow at 4pm.

**Warning: The 'ON' setting should only be used for cleaning the system. If left on permanently, pots can overflow.**

## Cleaning the system

- 35 The filter should be checked regularly. If using mineral based nutrients the filter should require minimal cleaning. Be aware using organic based nutrients and additives will require regular cleaning. Unscrew the lid of the filter and remove the cartridge for cleaning.

At the end of a crop cycle, drain down the system and fill with clean water. Clean the inside of the pots with a cloth. ROOT ROT X™ can be used to flush the system through. Run the red drain pump pipe to waste.

The fabric pots can be washed and reused several times. Refer to the label for cleaning instructions.

## Draining the CAMO® Tank

To perform a nutrient change or to drain the system.

Options:

1. Disconnect the pipe from the RAIN™ pump and connect a drain line.
2. Drain from the green tap at the bottom of the tank.
3. Use a separate water pump.
4. Pump the water through the system, use the red water pump to drain the system.

## WARNING: Pots can overflow

Check the blog on [alienhydroponics.co.uk](http://alienhydroponics.co.uk) for further info & updates.

Use **ROOT ROT X™** in your system to prevent Pythium, maintain a healthy white root zone and sterilise water lines.

- ELIMINATES PYTHIUM
- BREAKS DOWN BIOFILM
- INHIBITS BIOFILM REGENERATION
- ROOTS STAY HEALTHY & WHITE
- DISSOLVES NUTRIENT BUILD-UP
- PH NEUTRAL

## USES:

- CLEAN CUTTINGS
- FLUSHING STAGE
- POWDERY MILDEW
- STERILISE EQUIPMENT


Available online:


 [alienhydroponics.co.uk](http://alienhydroponics.co.uk)



*Designed, manufactured and distributed by*

**ALIEN**<sup>®</sup>  
THE EVOLUTION OF HYDROPONICS

 01403 888276

 [info@alienhydroponics.co.uk](mailto:info@alienhydroponics.co.uk)

Don't forget to check  
us out on social media:  
[@alienhydroponics](#)

